

black+blum

L O N D O N

2023 CATALOGUE



ABOUT US

Founded in 1998 by Dan Black and Martin Blum, Black+Blum is a London-based design company that produces high quality and eco-friendly lunch boxes, water bottles and thermoses. Unique and sustainable design is at the core of our brand and key to product development. We are passionate about creating genuinely functional, innovative and sustainable products that encourage healthy and eco-conscious living.

The entire range is made to last and has won over 25 design awards from around the globe. We are sold in over 60 countries, and have warehouse centres in the UK, EU and USA.

PROUD MEMBERS OF:



"We create products that people love to use, and are proud to own."

A handwritten signature in black ink that reads 'Dan Black'.

Dan Black

OUR PLEDGE TO THE PLANET

Sustainability is at the core of our design philosophy. We work with durable materials, naturally sourced where possible, creating products to be reused for life.

We are proud members of 1% for the Planet which means we commit to giving at least 1% of our sales revenue to non-profit environmental charities. Our chosen charity partners are City Harvest and Trees for Cities. City Harvest rescues surplus food and redistributes it to food banks, schools and community groups. Trees for Cities are the only UK charity working at a national and international scale to improve lives by planting trees in cities.



20+ YEARS OF DESIGN

Every product we release has been uniquely designed by us in our studio in London. Every detail is considered for long term use, and every material is sourced to the highest standard to create something truly beautiful.

From concept to final product, we conduct rigorous research and development to ensure everything we create has a place in the world, meets a real need, and will last a lifetime.



OUR MATERIALS

Our materials are chosen with great care - we consider how they are required to function, their durability, and their impact on the environment. We choose natural materials where possible, but our biggest aim is to create products which are made to last.





WOOD COMPOSITE

We mix recycled and sustainably-sourced (FSC and PEFC) wood with either polypropylene or TPR. This material can be recycled into itself but most importantly, it gives a highly durable finish that will age well.



CORK

We love using sustainably-sourced cork as a lid material on our vacuum insulated food thermoses, and on some of our water bottles. It is renewable, biodegradable and 100% natural.



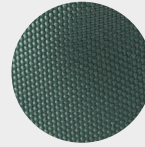
BAMBOO

It's naturally anti-fungal, and anti-bacterial - making it a perfect material to use as a lid/chopping board on some of our lunch boxes. We apply a natural mineral oil finish to seal it and, if used and cared for properly, it will last a lifetime.



CHARCOAL

We use active charcoal as a natural and plastic-free water filter to remove contaminants and add good minerals to tap water. Following a traditional Japanese technique, our charcoal producers only prune the branches of their fast growing native trees, without removing the roots.



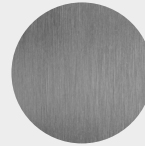
RECYCLED PET

We use recycled polyethylene (PET), made from things like plastic bottles, for the outer fabric of our lunch bag, and are looking to use it in other product ranges. It is tough, hard wearing, water repellent and easy to wipe clean.



PLASTIC

Every time we use a plastic, we use it sparingly and responsibly because sometimes, a specific plastic is the best material for the job required. These include polypropylene, Tritan, and POM.



STAINLESS STEEL

We use high quality 304 - 18/8 stainless steel for its long-lasting durability and excellent resistance to corrosion and rust. It is also 100% recyclable. Most importantly, it is a material that can last a lifetime and even improve with age and use.



GLASS

The glass used in some of our products is borosilicate - it is lightweight, strong and can withstand extreme temperatures (so safe for use in ovens, microwaves, freezers or dishwashers). It is also thermal shock resistant, so less likely to shatter when exposed to sudden temperature change.

OUR PRODUCTS

TRAVEL CUP

- 10 **NEW** - Insulated Travel Cup
- 12 **NEW** - Glass Travel Cup



GLASS

- 16 Glass Water Bottle
- 18 Glass Lunch Collection



MULTI-FUNCTION RANGE

NEW

- 20 Multi-Function Steel Boxes
- 24 Multi-Function Steel Bowls



STAINLESS STEEL

- 28 Bento Box
- 30 Stainless Steel Sandwich Boxes
- 32 Stainless Steel Lunch Boxes
- 34 **NEW** - Thermo Pot
- 36 Food Flask
- 38 **NEW** - Insulated Travel Tumbler
- 40 **NEW** - Explorer Bottles
- 42 Insulated Water Bottles
- 44 Steel Bottle



CHARCOAL FILTER

- 49 Charcoal Water Filters (single and 4-Pack)
- 50 Charcoal Water Filter & Coil
- 51 Charcoal Water Filter Pieces - 5kg
- 52 **NEW** - Eau Good Glass
- 54 Eau Good
- 56 Eau Carafe
- 57 Personal Carafe



ORIGINALS

- 60 Lunch Pot Original
- 62 Lunch Box Original



ACCESSORIES

- 66 Recipe Book
- 68 Lunch Bag
- 70 Cutlery Set & Case
- 71 Cutlery Set & Case CDU



TRAVEL CUP

Eliminating the need for single-use cups, from the café or from home, on your commute or on the trail – our new Travel Cup has perfected the experience of taking your brew with you, wherever you want to go.

It took us three years to test and improve on existing products in this established and highly competitive market, and we only wanted to release this range if it

was truly new and better than what was available. We have created our own unique designs - Two Travel Cups, both 100% leak proof but answering different needs and priorities – taste-neutral glass for flavour connoisseurs or insulated stainless steel to keep drinks hot or cold for hours.



NEW



NEW



NEW



Olive
TC-SS010



Ocean
TC-SS005



Orange
TC-SS003



Slate
TC-SS015

INSULATED TRAVEL CUP



340 ml
12 fl oz

Made from high quality stainless steel, it will keep your drinks hot for up to 5 hours, or cold for 8. The lid is 100% leak proof, lockable and easy to disassemble to clean. This is a no-nonsense, designed to function travel cup that will last you a lifetime.

MATERIALS

304/18-8 stainless steel, silicone, polypropylene, nylon, POK, POM

DIMENSIONS

D7.2 x H16.5 cm | D2.8 x H6.5 in





100%
LEAK PROOF

WATCH VIDEO 



NEW



Olive
TC-GR010



Ocean
TC-GR005



Coral
TC-GR0011



Slate
TC-GR015

GLASS TRAVEL CUP



340 ml
12 fl oz

Crafted from lightweight borosilicate glass, this design will give you a completely taste-neutral experience for either your favourite home brew or coffee shop roast. The non-slip insulating silicone sleeve gives protection to the surprisingly tough glass inner, and ensures you don't burn your hands. The top is 100% leak proof, lockable and easy to dismantle for thorough cleaning.

MATERIALS

Hand-blown borosilicate glass, silicone, polypropylene, nylon, POK, POM

DIMENSIONS

D7.2 x H16.5 cm | D2.8 x H6.5 in



100%
LEAK PROOF

WATCH VIDEO 

Dishwasher-safe lid
easily dismantles for
thorough cleaning

Protective &
non-slip sleeve

Borosilicate glass
cup is completely
taste-neutral



GLASS

A material used to store goods for centuries, glass has a variety of benefits; taste-neutral, fully recyclable, and aesthetically pleasing. Many of our glass products are made with borosilicate glass, known for its lightweight but durable qualities. All of our glass lunch boxes and water bottles are 100% leak proof and come in a range of different sizes and colours.







Olive
GR-WB-M010



Ocean
GR-WB-M005



Slate
GR-WB-M015



Orange
GR-WB-M003



Coral
GR-WB-M011



Burgundy
GR-WB-M004



Almond
GR-WB-M014

GLASS WATER BOTTLE



600 ml
20 fl oz

We wanted to create a minimal design that felt sturdy and authentic, allowing you to enjoy the simplicity that comes with drinking from glass. The thread on the inside of the neck means it has a smooth edge surface, making it easier, and more enjoyable to drink from. The 100% leak proof lid features high quality stainless steel inside, ensuring no plastic contact with water. A protective non-slip silicone sleeve provides a reassuring grip and comes in 7 different colours.

MATERIALS

Hand-blown borosilicate glass, 304/18-8 stainless steel, nylon, polypropylene, silicone (Almond sleeve is TPE with sustainable wood fibre)

DIMENSIONS

D6.5 x H23.5 cm | D2.6 x H9.3 in





Inside thread gives a better drinking experience



Steel lid is strong, leak proof, and taste-neutral



Nylon paracord carry loop

[WATCH VIDEO](#)



MULTI-FUNCTION RANGE

Made from innovative microwave-safe steel, the new Multi-Function range is ideal for meal prep, food storage and eating on-the-go. 100% leak proof and airtight, they give you peace of mind and keep food fresher for longer. Available in 2 shapes and 5 sizes they can easily be bought as a set - perfect for the whole family or different meal types.



NEW



NEW



MULTI-FUNCTION FOOD BOXES

Available in 3 sizes, these steel boxes are truly versatile. Not only microwave-safe, they're also dishwasher, freezer and oven-safe. The semi-transparent lid helps see the contents more clearly, and has been designed to be microwaved, removing the need for single-use plastic cling film. They're super easy to clean with fully removable seals, and allow for compact storage with stackable or nestable bases.

MATERIALS

BPA-free, 304/18-8 stainless steel, polypropylene, silicone

DIMENSIONS

600ml Steel Box: L17.5 x W12.6 x H6.5 cm | L6.8 x W4.9 x H2.5 in

900ml Steel Box: L19 x W14.6 x H7.3 cm | L7.5 x W5.7 x H2.9 in

1.2L Steel Box: L20 x W16.2 x H7.9 cm | L7.9 x W6.4 x H3.1 in



NEW

1.2L MULTI-FUNCTION FOOD BOX



1.2 L
42 fl oz



MICROWAVE-SAFE



NEW

900ML MULTI-FUNCTION FOOD BOX



Stacks + Nests



900 ml
32 fl oz

NEW

600ML MULTI-FUNCTION FOOD BOX

Innovative
microwave-safe
steel



Lightweight + tough
single-walled steel

Fully removable
seals for easy
cleaning



600 ml
20 fl oz



NEW

950ML MULTI-FUNCTION FOOD BOWL



950 ml
33 fl oz

MULTI-FUNCTION FOOD BOWLS

Exactly the same features as our Multi-Function boxes, the range is also available in bowls to suit those who prefer it. Just as leak proof, just as durable and just as lightweight.

MATERIALS

BPA-free, 304/18-8 stainless steel, polypropylene, silicone

DIMENSIONS

650ml Steel Bowl: L17 x W17 x H6 cm | L6.7 x W6.7 x H2.3 in

950ml Steel Bowl: L17 x W17 x H8.2 cm | L6.7 x W6.7 x H3.2 in



NEW

650ML MULTI-FUNCTION FOOD BOWL

Innovative
microwave-safe
steel



Stacks for
compact storage

Fully removable
seals for easy
cleaning



650 ml
23 fl oz



STAINLESS STEEL

One of our most popular ranges, our stainless steel products truly embody the ethos of "buy once, buy well". Built for almost any environment, they are incredibly durable and only get better with age and continuous use.





MADE IN A COLLABORATION WITH

Sara Kiyo Popowa

Sara Kiyo Popowa of Shiso Delicious



BAM-BT-L016

STAINLESS STEEL BENTO BOX



2 x 500 ml
2 x 17 fl oz

Designed in collaboration with bento expert, Sara Kiyo Popowa, and taking inspiration from Japan, it is one of the first fully leak proof steel bentos on the market. Reflecting traditional proportions whilst maintaining the Black+Blum design aesthetic, it includes two identical boxes which stack neatly atop each other. A steel fork is hidden beneath the antibacterial bamboo lid and each box has a generous capacity of 500ml, so can be used individually or as a pair. Breakfast and lunch, lunch and snacks, this box is all you need for the day.

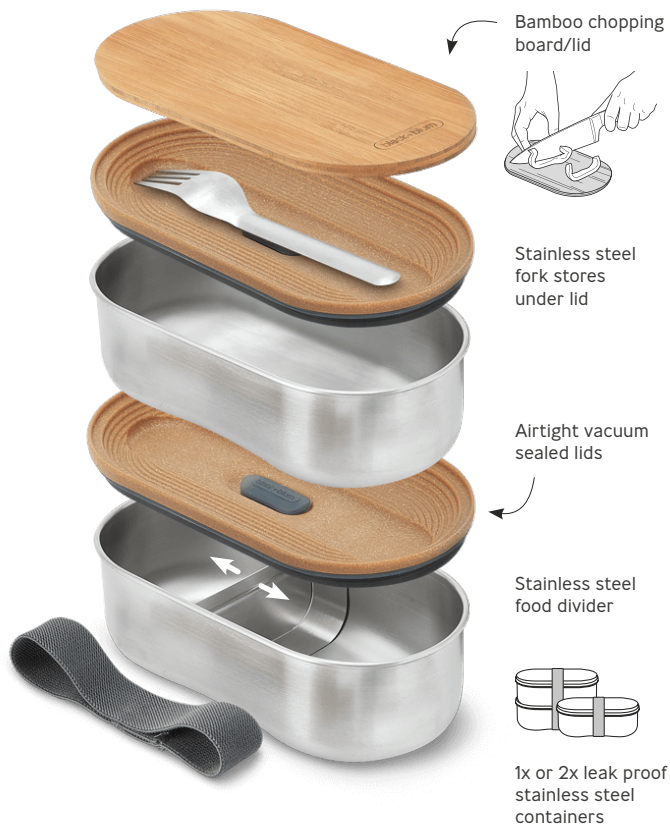
MATERIALS

304/18-8 stainless steel, polypropylene with wood fibre, silicone, nylon, natural bamboo

DIMENSIONS

L18.5 x W9.7 x H12.5cm | L7.3 x W3.8 x H4.9 in





WATCH VIDEO 



'The way we eat has the power to change the future.' Designing a bento box with Black+Blum has been a dream project. I hope you will enjoy using it. Sara x

Sara Kiyu Popowa is an artist, photographer and a passionate advocate of a plant-based lifestyle. Her recipe book *Bento Power* features her unique approach to packed lunch - good for you and for the planet.

www.shisodelicious.com | [@shisodelicious](https://www.instagram.com/shisodelicious)

STAINLESS STEEL SANDWICH BOXES

Made from high quality stainless steel with a naturally antibacterial bamboo lid and a silicone band, they are two of our favourite designs. The lid doubles as a chopping board or serving plate, and the larger size includes a silicone compartment which is microwave-safe. The lid is held securely in place by a silicone strap so everything stays safe inside - this box is perfect for the park, the commute and the trail.

MATERIALS

304/18-8 stainless steel, natural bamboo, silicone

DIMENSIONS

Stainless Steel Sandwich Box Large:
L19 x W13.5 x H7.5 cm | L7.5 x W5.3 x H3 in

Stainless Steel Sandwich Box:
L22 x W14.5 x H5 cm | L8.7 x W5.7 x H2 in



STAINLESS STEEL SANDWICH BOX LARGE



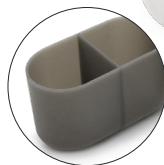
Olive
BAM-SB-L010



Ocean
BAM-SB-L005



Orange
BAM-SB-L003



Silicone compartment included



1.25 L
42 fl oz

STAINLESS STEEL SANDWICH BOX



Olive
BAM-SB010



Ocean
BAM-SB005



Orange
BAM-SB003



QUALITY
STAINLESS
STEEL

BPA
FREE

900 ml
30 fl oz

WATCH VIDEO



STAINLESS STEEL LUNCH BOXES

The ultimate product for outdoor adventurers and busy commuters, this design is incredibly sturdy and a favourite among those living plastic-free and zero-waste. The silicone valve creates a secure and leak proof vacuum-sealed closure and the larger size includes a slider/divider to separate your food. Both sizes include a stainless steel fork and coloured silicone strap for added security.

MATERIALS

304/18-8 stainless steel, silicone

DIMENSIONS

Stainless Steel Lunch Box Large:
L20 x W14 x H6 cm | L7.8 x W5.5 x H2.3 in

Stainless Steel Lunch Box:
L17.5 x W13 x H5 cm | L7 x W5.1 x H2 in



STAINLESS STEEL LUNCH BOX LARGE



Olive
BAM-SS-L010



Ocean
BAM-SS-L005



Orange
BAM-SS-L003



Slider/divider included to help separate your food



1 L
34 fl oz

STAINLESS STEEL LUNCH BOX



Olive
BAM-SS-S010



Ocean
BAM-SS-S005



Orange
BAM-SS-S003



600 ml
20 fl oz



NEW



BAM-TPB015

THERMO POT



550 ml
18.5 fl oz

Vacuum insulated and 100% leak proof, the Thermo Pot keeps food hot for up to 6 hours, or cold for 8. The natural cork lid is water-repellent, and has thumb grooves to give you extra grip when opening. It includes a stainless steel spoon held in place by a nylon strap. Elegant and minimalist design, this product was created to come with you, where ever you want to go.

MATERIALS

304 - 18/8 stainless steel, polypropylene, silicone, nylon, natural cork

DIMENSIONS

D10.5 x H16cm | L6.3 x D4.15 in







Olive
BAM-FFB-S010



Ocean
BAM-FFB-S005



Orange
BAM-FFB-S003

FOOD FLASK



400 ml
13.5 fl oz

Insulated stainless steel and 100% leak proof, the Food Flask is vacuum-sealed, keeping food hot for up to 6 hours, or cold for 8. The lid has a full-steel underside, so there's no plastic contact with food, and comes with a wood fibre polypropylene spoon, which fits snugly to the side. It's held in place by a nylon strap which comes in 3 colours. A generous capacity in a compact package, it's simple, sleek and made to last.

MATERIALS

304/18-8 stainless steel, polypropylene, silicone, nylon, polypropylene with wood fibre

DIMENSIONS

D8.7 x H15.5 cm | D3.1 x H6.1 in



Vacuum-insulated flask keeps food hot or cold



Full stainless steel food contact



Ladle with wood fibre designed for easy eating



WATCH VIDEO 

NEW



100% leak proof lid lock design



Olive
BAM-TT010



Ocean
BAM-TT005



Orange
BAM-TT003

INSULATED TRAVEL TUMBLER



600 ml
20 fl oz

Made from high quality double-walled stainless steel, it's perfect for whatever you're brewing. Coffee, beer, cocktails or tea, it will keep drinks hot for up to 5 hours, or cold for 8. The lid is 100% leak proof and opens with one hand - ideal for multi tasking when you're out and about.

MATERIALS

304/18-8 stainless steel, Tritan™, silicone, nylon

DIMENSIONS

H 20.7cm x D 9.4cm | H 8.15 x D 3.7 in





EXPLORER BOTTLES



850 ml | 28.7 fl oz | 650 ml | 22 fl oz

It's all in the name, this products was made for adventures. We wanted to create something which was a step above our other steel bottles, to deal with the toughest environments. Fully insulated to keep drinks hot or cold for hours, it comes in 2 generous sizes. The smooth rim with inside thread makes staying hydrated a dream, and, as always the lid is 100% leak proof. This bottle is truly at home in the great outdoors and will last a lifetime.

MATERIALS

304/18-8 stainless steel, silicone, nylon

DIMENSIONS

Explorer Bottle (850ml): D8.6 x H23.5 cm | D3.4 x H9.2 in

Explorer Bottle (650ml): D8.6 x H19 cm | D3.4 x H7.5 in



NEW

Strong paracord carry loop



Olive
BAM-EIWB-L010



Ocean
BAM-EIWB-L005



Orange
BAM-EIWB-L003



NEW



Smooth drinking spout
with inner thread for
easy drinking



Olive
BAM-EIWB-S010



Ocean
BAM-EIWB-S005



Orange
BAM-EIWB-S003



Full stainless
steel drink
contact



WATCH VIDEO 



INSULATED WATER BOTTLE



750 ml | 500 ml
25 fl oz | 17 fl oz

Minimalist design and no-fuss functionality, our Insulated Water Bottle does exactly what you need it to. Keeps drinks cold for up to 24hrs or hot for up to 12hrs, and the vegan leather strap means no missing lid. Our signature style bottleneck has the thread on the inside, giving a smooth and comfortable opening and the wide spout allows for easy pouring. This bottle is a favourite among urban commuters and countryside walkers alike, comes in 3 colours and is 100% leak proof.

MATERIALS

304/18-8 stainless steel, polypropylene, vegan leather, silicone

DIMENSIONS

Insulated Water Bottle Large (750ml): D7.7 x H28.5 cm | D3 x H11 in

Insulated Water Bottle (500ml): D7.3 x H23 cm | D2.8 x H9 in



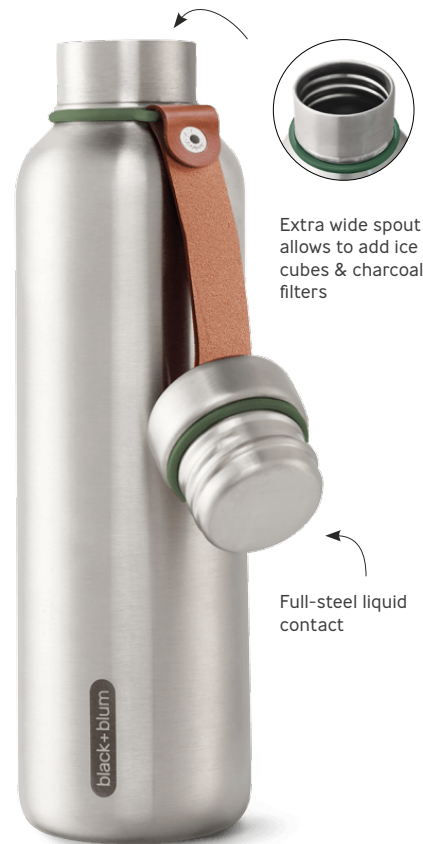
Olive
BAM-IWBB-L010



Ocean
BAM-IWBB-L005



Orange
BAM-IWBB-L003



WATCH VIDEO 

Vegan leather strap keeps lid secure



Olive
BAM-IWBB-S010



Ocean
BAM-IWBB-S005



Orange
BAM-IWBB-S003



WATCH VIDEO 



STEEL BOTTLE



600 ml
20 fl oz

We've gone back to basics with our single-walled lightweight stainless steel bottle, for those who enjoy the simple things in life. It's easy to use, beautiful in its form and includes a natural cork leak proof lid, with a convenient carry-loop. It's surprisingly compact for its capacity and fits easily into standard bike bottle cages and cup holders.

MATERIALS

304/18-8 stainless steel, polypropylene, silicone, natural cork

DIMENSIONS

D7.5 x H20 cm | D2.95 x H7.9 in



Compact size/weight when compared with standard double-walled vacuum bottle



Steel capped lid ensures plastic-free liquid contact



Olive
BAM-WBB-S010



Ocean
BAM-WBB-S005



CHARCOAL FILTRATION

Activated charcoal has been used for centuries to remove toxins, treat digestive ailments, and filter drinking water. We quickly realised that using it in tap water not only made it taste delicious, but it completely eliminated the need for bottled water, and the single-use plastic that comes with it. What began with one bottle has quickly expanded to an entire range, with charcoal filtration being one of our best-selling collections.

We source our charcoal from the skilled artisan makers of Laos as they follow strict conservation rules to protect the surrounding forests. The fast-growing native trees

are pruned and the wood is transported to the kiln. It is stored there for 1 month untouched to dry the wood. It is placed inside the kiln and burned until it reaches 1200°C to make it red-hot and carbonised. The charcoal is removed and quickly covered with a powder made from earth, sand and ash, and this gives the charcoal surface a whitish hue. This process, which takes 21 days, produces what is called 'Binchotan' charcoal. The rapid rise in temperature, followed by a quick cooling, incinerates the bark and leaves a smooth, hard surface, and creates a product which can be used for deodorising, dehumidifying and filtering water.

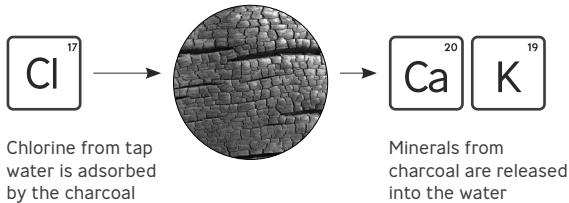


BINCHOTAN CHARCOAL HISTORY

It is believed that a form of Binchotan charcoal (sometimes referred to as 'white charcoal') was introduced to Japan by a monk and scholar called Kukai 1,200 years ago. However, it wasn't until the Edo Period (17th century) that a man called Binchuya Chozaemon made it popular.

HOW IT WORKS?

This type of filtering works using a process similar to reverse osmosis. Binchotan charcoal has an incredibly porous surface with tiny cavities orientated in many directions - just 1 gram has a surface area of 500m² (the size two tennis courts). The positive ions of contaminants in the water (like chlorine) are attracted to the negative surface of the carbon where they are held. In reverse, the charcoal releases its natural minerals such as calcium, potassium and magnesium back into the water, which softens it and enhances the taste.



* Recharge your charcoal after 3 months of use by boiling it for 10 minutes. After 6 months recycle as fertiliser, deodoriser or fuel



CHARCOAL WATER FILTERS



Binchotan charcoal makes tap water taste great! Add to water and leave for 1 – 8 hours, then enjoy clean, filtered, and delicious drinking water. Each stick lasts 6 months and comes vacuum-packed in recyclable plastic for immediate use. Counter POS available (see p65).

Also available in a 4-pack giving you 2 years' worth of filtration. Each filter is individually vacuum-packed in recyclable plastic for immediate use.

MATERIALS

100% natural wood

DIMENSIONS & PRODUCT CODES

Single Charcoal Water Filter (EGS001-1B):
(approx.) D2.5 x L11.8 cm | D1 x L5 in

Charcoal Water Filter 4-pack (EGS004):
W9.5 x L16.5 x H7 cm | W3.8 x L6.5 x H2.8 in



Fits in all
our bottles



WATCH VIDEO

CHARCOAL WATER FILTER & COIL

QUALITY
STAINLESS
STEEL

100%
NATURAL
WOOD



Turn any bottle into a filtered bottle with our universal charcoal coil, it comes with an active charcoal stick giving you 6 months of clean, clear and delicious water. No rattling and no scratches, it's locked into place with a spring coil. It's taste-neutral and easy to use.

Counter POS available (see p65).

MATERIALS

304/18-8 stainless steel, 100% natural wood
(1 x charcoal & 1 x steel holder included in each pack)

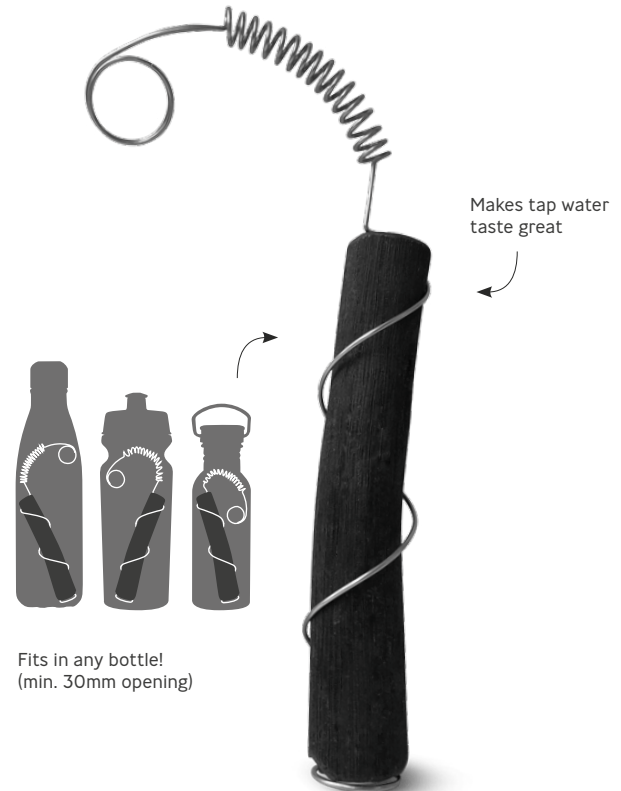
DIMENSIONS & PRODUCT CODE

Dimensions vary (15mm to 28mm diameter,
maximum length 118mm)

EGS001-1C



WATCH VIDEO



Makes tap water
taste great

Fits in any bottle!
(min. 30mm opening)

CHARCOAL WATER FILTER PIECES - 5KG



As more and more people are looking to live plastic-free and zero-waste, our 5kg bulk pack of charcoal allows consumers to buy by weight, and bring their own packaging. The self-ready box allows you to select the amount you need, and also illustrates the secondary uses of charcoal to extend its life, such as a deodoriser or dehumidifier.



MATERIALS

100% natural wood

BOX DIMENSIONS & PRODUCT CODE

W29.5 x L29.5 x H20.5 cm | W11.6 x L11.6 x H8 in

EGS5KG

Display ready packaging



NEW



Olive
EGO-EGG010



Ocean
EGO-EGG005



EAU GOOD GLASS



650 ml
22 fl oz

Made from hand-blown durable borosilicate glass, this bottle includes an active charcoal water filter and coil, and is protected by a recycled polyester insulating sleeve. Its lid is a natural wood fibre polypropylene mix and is 100% leak proof. Never has water looked so clear or tasted so clean.

MATERIALS

Hand-blown borosilicate glass, 304/18-8 stainless steel, polypropylene with wood fibre, recycled polyester, silicone, polypropylene

DIMENSIONS

D8.2 x H23.6 cm | D3.2 x H9.3 in







Olive
EG010



Lime
EG002



Blue
EG001



Red
EG004



Black
EG005

EAU GOOD



800 ml
27 fl oz

Our iconic water bottle comes with an active charcoal filter that locks easily in place, thanks to the innovative squeeze-and-lock charcoal groove. The natural cork lid with stainless steel closing ring is watertight, and the colourful fabric loop makes it easy to carry.

MATERIALS

Tritan™, 304/18-8 stainless steel, nylon, silicone, natural cork

DIMENSIONS

D8.5 x H24 cm | D3.3 x H9.4 in





CARAFES

Both our carafes are a beautiful natural, organic shape which is a pleasure to hold and pour from. They are made from lightweight and durable hand-blown glass, and come with our famous active charcoal water filter, giving you 6 months of pure, clear and delicious water.

The larger of the two, the Eau Carafe is perfect for entertaining and has a natural cork stopper with a removable silicone cap to prevent mould. The Personal Carafe is ideal at home on bedside and kitchen tables, or in the office to keep you hydrated throughout the day – it also comes with a small tumbler and sustainably-sourced cork coaster.

MATERIALS


Hand-blown borosilicate glass, natural cork (silicone - Eau Carafe only)

DIMENSIONS & PRODUCT CODES

Eau Carafe (ECO02): D9.5 x H28 cm | D3.7 x H11 in

Personal Carafe (ECO03): D10 x H25 cm | D4 x H9.8 in



Watch a video 

EAU CARAFE



Sustainably-sourced
cork stopper



1.1 L
37 fl oz

PERSONAL CARAFE



Hand-blown drinking glass/stopper

Natural cork coaster



800 ml
27 fl oz

WATCH VIDEO





ORIGINALS

This range represents the classic designs that started the journey for us. Inspired by Japanese Bento and how beautifully they present food, products in the Originals Collection have been best sellers for years. To celebrate their 10th anniversary in 2020, we updated them to be even better, whilst remaining true to their initial design aesthetic and appeal.





Olive
BAO-BP010



Ocean
BAO-BP005

LUNCH POT ORIGINAL



300 / 600 ml
10 / 20 fl oz

The Lunch Pot Original includes two leak proof pots that can be locked together for easy carrying. The pots are completely microwave and dishwasher-safe, a silicone strap holds the stainless steel “spork” (spoon and fork). Carry anything from breakfast to lunch and everything in between, and when you’re done, the smaller pot fits conveniently inside the larger pot for easy storage.

MATERIALS

Polypropylene, Tritan™, 304/18-8 stainless steel, silicone

DIMENSIONS

D12 x H19.5 cm | D4.7 x H7.7 in





← Convenient carry handle

🔒 Two leak proof pots twist 'lock' together



Nests for convenient storage after use

WATCH VIDEO 



LUNCH BOX ORIGINAL



1 L
34 fl oz

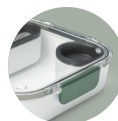
The Lunch Box Original includes an inner container as well as a leak proof sauce pot with a garnish area in the lid, and a stainless steel fork. Microwave-safe and fully leak proof, this is one of the most versatile lunch boxes in our entire range.

MATERIALS

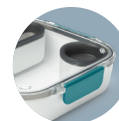
Polypropylene, Tritan™, 304/18-8 stainless steel, silicone

DIMENSIONS

L20 x W20 x H5.5 cm | L7.9 x W7.9 x H2.2 in



Olive
BAO-BA010



Ocean
BAO-BA005





ACCESSORIES

Our accessories have been designed to pair with our main product ranges. From a reusable cutlery set, to a recycled PET Lunch Bag or even a recipe book, they are easy to add to any purchase.





RECIPE BOOK - LET'S DO LUNCH BOX

With over 80 recipes to make mornings and lunchtimes brighter, healthier and more sustainable, 'Let's Do Lunch Box' has been created specifically for our products. It is ideal to help boost average order value and merchandising within store. Including recipes from 4 well-known recipe developers, health, wellness and food influencers including Sara Kiyo Popowa (@shisidelicious) and Ryan Carter (@livevitae), it's packed with nutritious and delicious meal ideas.

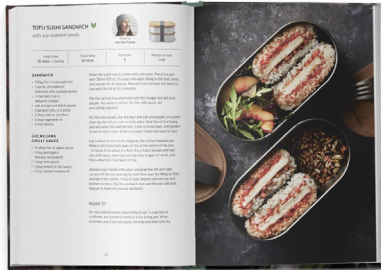
Better still, 5% of sales are donated to one of our charity partners, City Harvest, who rescue surplus food and redistribute it to food banks, schools and community groups.

DIMENSIONS & PRODUCT CODE

W2 x L19.5 x H23.5 cm | W0.8 x L7.7 x H9.2 in

LBR-B001





80+ delicious and nutritious recipes



Each recipe includes product recommendations



16 great recipes from food influencers



5% DONATION

of sales go to our eco-charity partner, City Harvest



LUNCH BAG



6.7 L
235 fl oz

With a generous capacity of 6.7L and made from recycled plastic bottles, this lunch bag is all you need to carry your breakfast, lunch and snacks for the day. The sealed insulated construction keeps the contents cool, it's also leak proof, water repellent and easy to wipe clean. The roll-down top and clip make it easy to carry, you can even strap it to your bike or backpack.

MATERIALS

Iron (hook), polypropylene (strap), Recycled PET (outer fabric), PEVA (BPA and food safe inner lining)

DIMENSIONS

W20 x D15 x H31 cm | W7.9 x D5.9 x H12.2 in

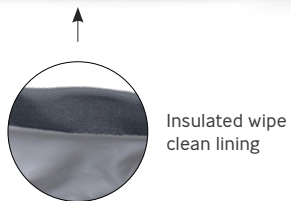
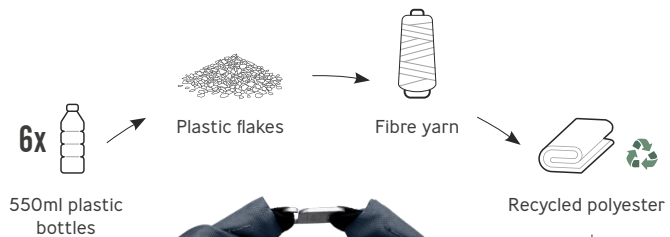


Olive
LBB010



Slate
LBB015





CUTLERY SET & CASE



Spoon, fork and knife nest neatly in the case

STAINLESS STEEL CUTLERY

QUALITY
STAINLESS
STEEL



BPA
FREE

This stacking knife, fork and spoon set feels at home in your hands, and conveniently nests into a hygienic, compact carry case.

Also available as an alternative to the boxed packaging for merchandising in store, we have developed a Counter Display Unit (CDU); ideal to place near the checkout for impulse or add-on purchases. 16 units come in a shelf-ready display outer.

MATERIALS

304/18-8 stainless steel, polypropylene

DIMENSIONS & PRODUCT CODES

Cutlery Set & Case (BAM-SSC001):
L5 x W20 x H2 cm | L2 x W7.8 x H0.8 in

Cutlery Set & Case CDU (BAM-SSC002):
L14.5 x W25 x H28 cm | W5.7 x D9.8 x H11 in



CUTLERY SET & CASE CDU

16 individually
labelled pieces



WATCH VIDEO 



BRANDING

The Black+Blum brand is synonymous with original design and a sustainable mission. We proudly display our logo on all products and packaging, and include product features clearly outlined in simple yet effective illustrations and icons.

OUR PACKAGING

All our product packaging is made from unbleached and uncoated cardboard, making it better for recycling (it can even be added to home compost). Our packaging ensures all our designs are fully protected in transit and reach the end customer in perfect condition, yet are also beautifully presented and maintain a high value. It makes every product a potential self-purchase or gift.



COUNTER POS STAND

Our euro hook stand is made of powder-coated steel, and assembles with just two screws, making it our simplest POS unit yet. It accommodates our charcoal boxes and also our cutlery set & case, with interchangeable backing cards available in various languages as required. Comes flat-packed.

DIMENSIONS & PRODUCT CODE

W21 x D27 x H36 cm | W8.2 x D10.6 x H14.2 in
POS-COUNTERTOP



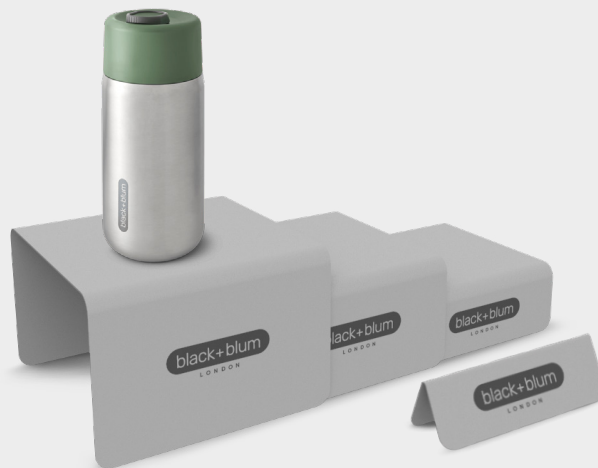
RISERS AND NAMEPLATE

The set of 3 powder-coated steel risers will help elevate and complement any display, and neatly stack together for convenient storage.

DIMENSIONS & PRODUCT CODES

Largest riser: W15 x D15 x H10 cm | W5.9 x D5.9 x H3.9 in
POS-RISERS

Nameplate: W12 x D4 x H4 cm | W4.7 x D1.6 x H1.6 in
POS-PLATE



WOODEN POS

This floor-standing POS unit will make an impact in your store, and is ideal for displaying a wide range of Black+Blum products on a natural FSC Certified wooden surface. The top two shelves are high enough to accommodate the metal POS unit (for charcoal and cutlery). The stand comes flat-packed and is easy to assemble with supplied instructions.

DIMENSIONS & PRODUCT CODE

W65 x D36 x H171 cm
W25.5 x D14 x H67.3 in
POS-FSDU-S

Made from FSC
certified wood



A5 STRUT CARDS

Include lifestyle and food imagery on your display to bring the products to life.

DIMENSIONS

Landscape: W21 x H14.8cm | W8.26 x H5.8 in
Portrait: W14.8 x H21cm | W5.8 x H8.26 in

Mounted cards with
foot for easy display





POS-A5-CARD02-AB



POS-A5-CARD02-AD



POS-A5-CARD02-AE



POS-A5-CARD02-AG



POS-A5-CARD02-J



POS-A5-CARD02-M



POS-A5-CARD02-M2



POS-A5-CARD02-N



POS-A5-CARD02-O



POS-A5-CARD02-Q



POS-A5-CARD02-R



POS-A5-CARD02-U



POS-A5-CARD02-W



POS-A5-CARD02-X



POS-A5-CARD02-Z



EN: POS-A5-CARD05-B-EN
FR: POS-A5-CARD05-B-FR
DE: POS-A5-CARD05-B-DE



EN: POS-A5-CARD05-A-FR
FR: POS-A5-CARD05-A-FR
DE: POS-A5-CARD05-A-DE



EN: POS-A5-CARD02-AC-EN
FR: POS-A5-CARD02-AC-FR
DE: POS-A5-CARD02-AC-DE

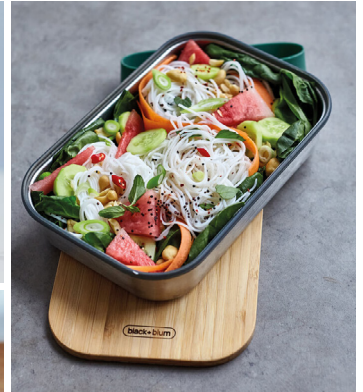


POS-A5-CARD02-AF

PHOTOGRAPHY AND VIDEOS

We have a wide range of lifestyle, food images and videos available to help support your online sales and social media.

LIFESTYLE AND FOOD



All images and videos can be found at

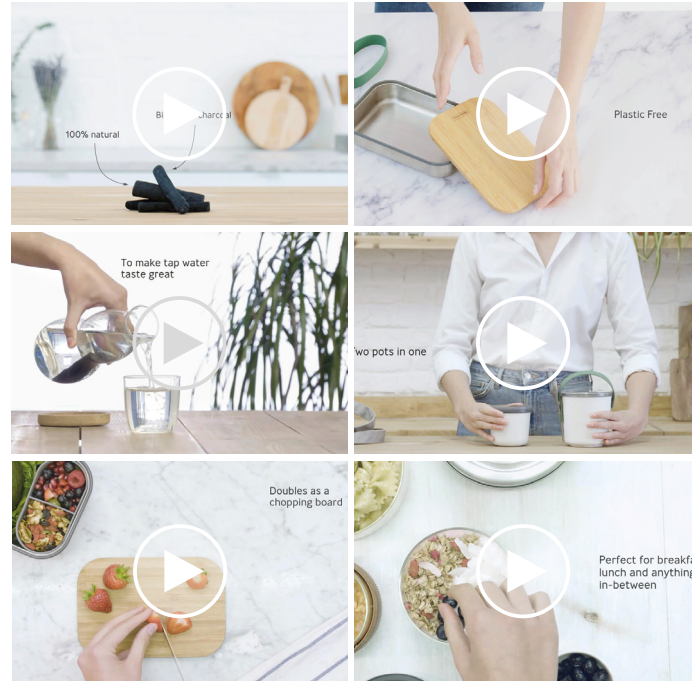
www.black-blumassets.com ↓



PRODUCT CUT OUTS



VIDEOS



CO-BRAND WITH US

Our range of unique and eco-friendly products are the perfect gift or promotional item for your employees and corporate events. From water bottles to lunch boxes, insulated thermoses or even a portable cutlery set - the possibilities are endless.

We have laser-etching and printing suppliers in the UK, Europe and US or, for larger volumes, at our factories. Made from high quality materials, all our products are built to last and easy to customise. Enquire to create something special and sustainable with your logo.

EXPLORE CO-BRAND OPTIONS

View our brochure by scanning the QR code below or email us at co-brand@black-blum.com to learn more.





CONTACTS

sales@black-blum.com

pr@black-blum.com

Black and Blum Ltd.
40 Rushworth Street, London, SE1 0RB, UK

T: +44(0) 20 7633 0022
USA toll free phone: 877 360 9222

Black and Blum Europe BV
T: +32 3 808 53 68

www.black-blum.com

For details of our international distributors
email us at sales@black-blum.com

B+B BROCHURE



BRO08